

# Test Report

Report No. RLSZC000481700011-A

Page 1 of 4

Applicant EVERGREEN DONGGUAN ELECTRONICS LTD/DONGGUAN MAOCHANG PRINTED CIRCUIT BOARD LIMITED

Address THE 4TH INDUSTRIAL ZONE, NANSHAN, HUMEN, DONGGUAN, GUANGDONG, CHINA

## Report on the submitted sample(s) said to be

Sample Name FR-4 Immersion Tin 沉锡板  
Sample Description PCB(mixed)  
Sample Received Date Mar. 17, 2010  
Testing Period Mar. 17, 2010 to Mar. 19, 2010

**Test Requested** As specified by client, to determine the Lead(Pb), Cadmium(Cd), Mercury(Hg), Hexavalent Chromium(Cr(VI)), Polybrominated Biphenyls(PBBs), Polybrominated Diphenyl Ethers(PBDEs) content in the submitted sample and it was tested as a whole.

## Test Method

Test Item(s)	Test Method	Measured Equipment(s)	MDL
Lead(Pb)	IEC 62321:2008 Ed.1 Sec.10	ICP-OES	2 mg/kg
Cadmium(Cd)	IEC 62321:2008 Ed.1 Sec.10	ICP-OES	2 mg/kg
Mercury(Hg)	IEC 62321:2008 Ed.1 Sec.7	ICP-OES	2 mg/kg
Hexavalent Chromium(Cr(VI))	IEC 62321:2008 Ed.1 Annex C	UV-Vis	2 mg/kg
Polybrominated Biphenyls(PBBs)	IEC 62321:2008 Ed.1 Annex A	GC-MS	5 mg/kg
Polybrominated Diphenyl Ethers(PBDEs)	IEC 62321:2008 Ed.1 Annex A	GC-MS	5 mg/kg

**Test Result(s)** Please refer to the following page(s).

Tested by 

Inspected by 

Approved by 

Date Mar. 25, 2010

Technical Manager

No. 38792132

# Test Report

Report No. RLSZC000481700011-A

Page 2 of 4

**Test Result(s)**

Tested Item(s)	Content
Lead(Pb)	N.D.
Cadmium (Cd)	N.D.
Mercury(Hg)	N.D.
Hexavalent Chromium(Cr(VI))	N.D.
Tested Item(s)	Content
<b>Polybrominated Biphenyls(PBBs)</b>	
Monobromobiphenyl	N.D.
Dibromobiphenyl	N.D.
Tribromobiphenyl	N.D.
Tetrabromobiphenyl	N.D.
Pentabromobiphenyl	N.D.
Hexabromobiphenyl	N.D.
Heptabromobiphenyl	N.D.
Octabromobiphenyl	N.D.
Nonabromobiphenyl	N.D.
Decabromobiphenyl	N.D.
Tested Item(s)	Content
<b>Polybrominated Diphenyl Ethers(PBDEs)</b>	
Monobromodiphenyl ether	N.D.
Dibromodiphenyl ether	N.D.
Tribromodiphenyl ether	N.D.
Tetrabromodiphenyl ether	N.D.
Pentabromodiphenyl ether	N.D.
Hexabromodiphenyl ether	N.D.
Heptabromodiphenyl ether	N.D.
Octabromodiphenyl ether	N.D.
Nonabromodiphenyl ether	N.D.
Decabromodiphenyl ether	N.D.

**Note:**  
 -MDL = Method Detection Limit  
 -N.D. = Not Detected (<MDL )  
 -mg/kg = ppm = parts per million

**Remark:** This report is amended base on the test report No.RLSZC000481700011.

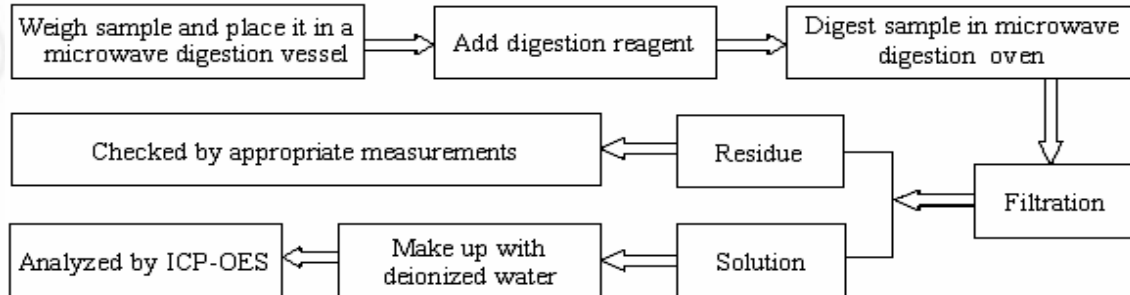
# Test Report

Report No. RLSZC000481700011-A

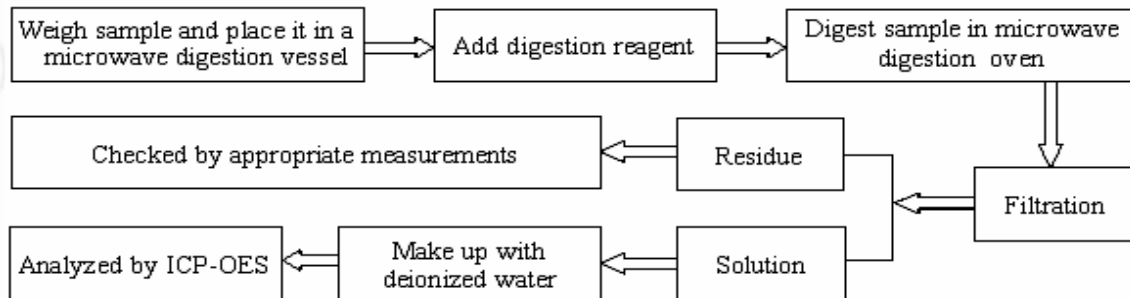
Page 3 of 4

## Test Process

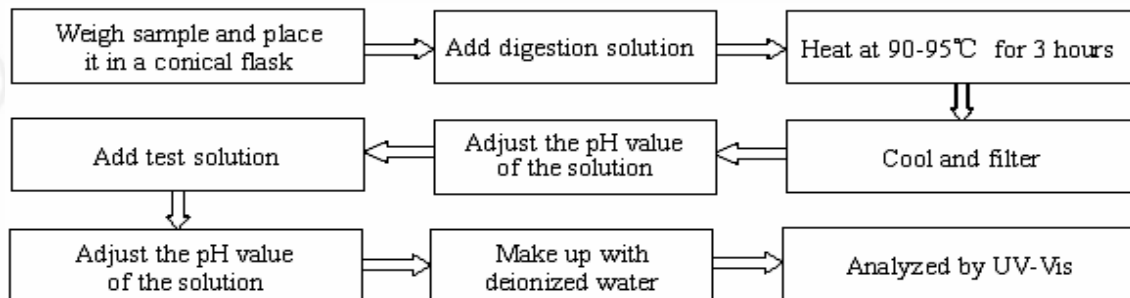
### 1. Lead(Pb), Cadmium(Cd)



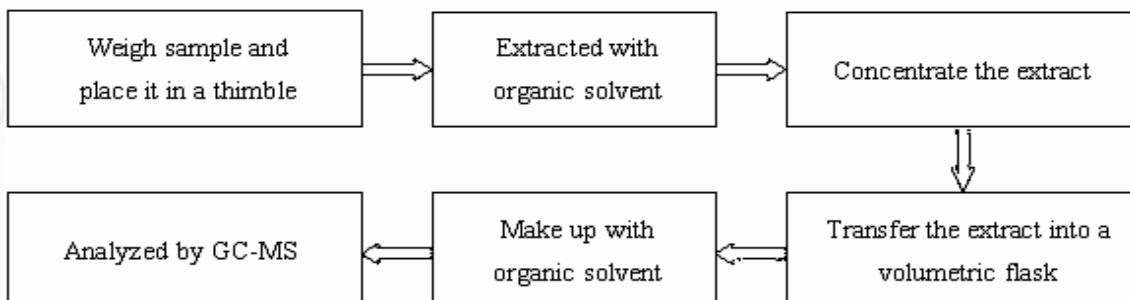
### 2. Mercury(Hg)



### 3. Hexavalent Chromium(Cr(VI))



### 4. Polybrominated Biphenyls(PBBs), Polybrominated Diphenyl Ethers(PBDEs)

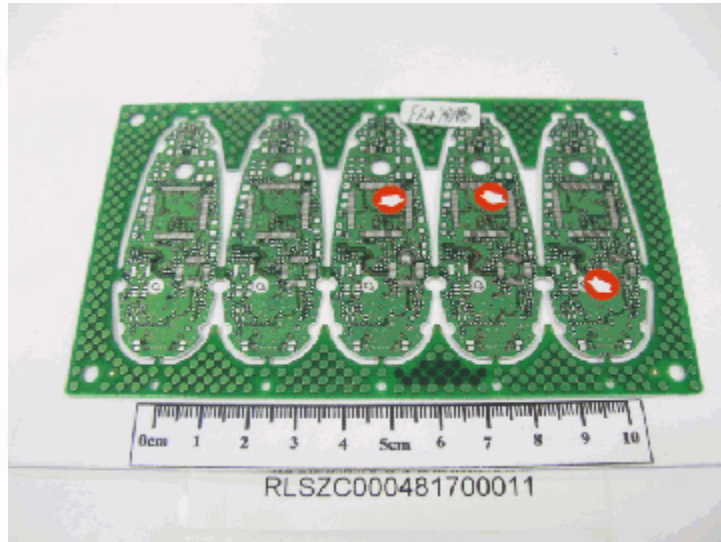


# Test Report

Report No. RLSZC000481700011-A

Page 4 of 4

## Photo(s) of the sample(s)



\*\*\* End of report \*\*\*

This report is considered invalidated without the Special Seal for Inspection of the CTI. This report shall not be altered, increased or deleted. The results shown in this test report refer only to the sample(s) tested. Without written approval of CTI, this test report shall not be copied except in full and published as advertisement.

Building C, Hongwei Industrial Zone, Baoan 70 District, Shenzhen