

Test Report

Report No. RLSZC000481700008-A

Page 1 of 4

Applicant EVERGREEN DONGGUAN ELECTRONICS LTD/DONGGUAN MAOCHANG PRINTED CIRCUIT BOARD LIMITED

Address THE 4TH INDUSTRIAL ZONE, NANSHAN, HUMEN, DONGGUAN, GUANGDONG, CHINA

Report on the submitted sample(s) said to be



Sample Name CEM-3 NiAu Plating 电镍金板
Sample Description PCB(mixed)
Sample Received Date Mar. 17, 2010
Testing Period Mar. 17, 2010 to Mar. 19, 2010

Test Requested As specified by client, to determine the Lead(Pb), Cadmium(Cd), Mercury(Hg), Hexavalent Chromium(Cr(VI)), Polybrominated Biphenyls(PBBs), Polybrominated Diphenyl Ethers(PBDEs) content in the submitted sample and it was tested as a whole..

Test Method

Test Item(s)	Test Method	Measured Equipment(s)	MDL
Lead(Pb)	IEC 62321:2008 Ed.1 Sec.10	ICP-OES	2 mg/kg
Cadmium(Cd)	IEC 62321:2008 Ed.1 Sec.10	ICP-OES	2 mg/kg
Mercury(Hg)	IEC 62321:2008 Ed.1 Sec.7	ICP-OES	2 mg/kg
Hexavalent Chromium(Cr(VI))	IEC 62321:2008 Ed.1 Annex C	UV-Vis	2 mg/kg
Polybrominated Biphenyls(PBBs)	IEC 62321:2008 Ed.1 Annex A	GC-MS	5 mg/kg
Polybrominated Diphenyl Ethers(PBDEs)	IEC 62321:2008 Ed.1 Annex A	GC-MS	5 mg/kg

Test Result(s) Please refer to the following page(s).

Tested by 
Approved by 
Technical Manager



Inspected by 

Date Mar. 25, 2010

No. 38792132

Test Report

Report No. RLSZC000481700008-A

Page 2 of 4

Test Result(s)

Tested Item(s)	Content
Lead(Pb)	N.D.
Cadmium (Cd)	N.D.
Mercury(Hg)	N.D.
Hexavalent Chromium(Cr(VI))	N.D.
Tested Item(s)	Content
Polybrominated Biphenyls(PBBs)	
Monobromobiphenyl	N.D.
Dibromobiphenyl	N.D.
Tribromobiphenyl	N.D.
Tetrabromobiphenyl	N.D.
Pentabromobiphenyl	N.D.
Hexabromobiphenyl	N.D.
Heptabromobiphenyl	N.D.
Octabromobiphenyl	N.D.
Nonabromobiphenyl	N.D.
Decabromobiphenyl	N.D.
Tested Item(s)	Content
Polybrominated Diphenyl Ethers(PBDEs)	
Monobromodiphenyl ether	N.D.
Dibromodiphenyl ether	N.D.
Tribromodiphenyl ether	N.D.
Tetrabromodiphenyl ether	N.D.
Pentabromodiphenyl ether	N.D.
Hexabromodiphenyl ether	N.D.
Heptabromodiphenyl ether	N.D.
Octabromodiphenyl ether	N.D.
Nonabromodiphenyl ether	N.D.
Decabromodiphenyl ether	N.D.

Note:
 -MDL = Method Detection Limit
 -N.D. = Not Detected (<MDL)
 -mg/kg = ppm = parts per million

Remark: This report is amended base on the test report No.RLSZC000481700008.

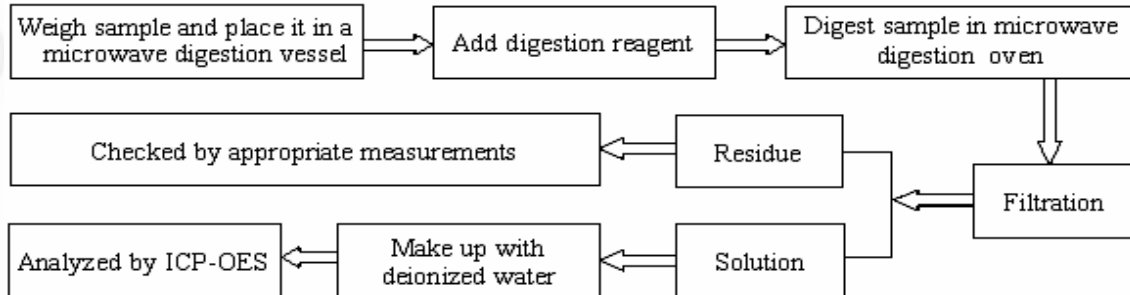
Test Report

Report No. RLSZC000481700008-A

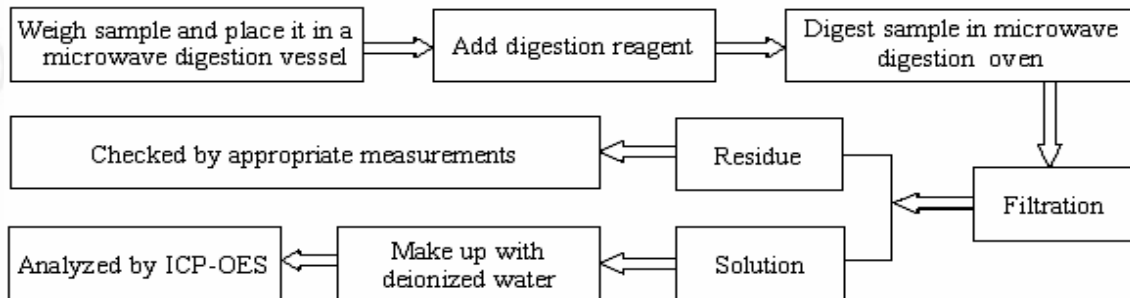
Page 3 of 4

Test Process

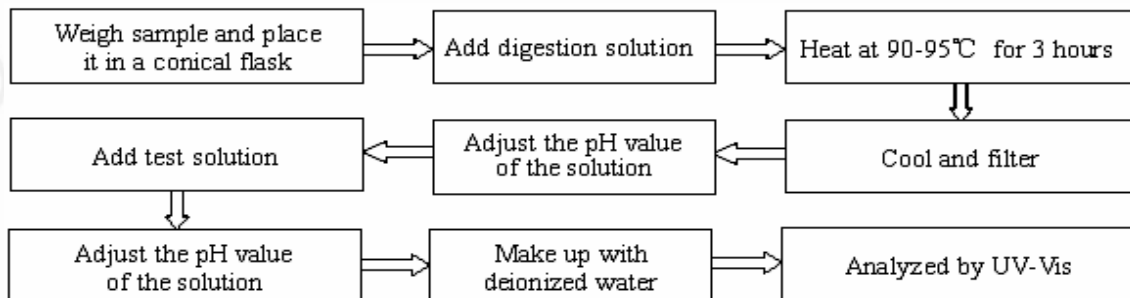
1. Lead(Pb), Cadmium(Cd)



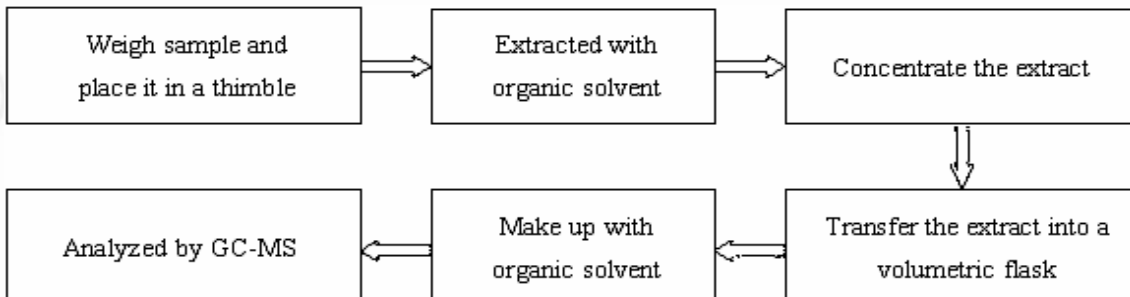
2. Mercury(Hg)



3. Hexavalent Chromium(Cr(VI))



4. Polybrominated Biphenyls(PBBs), Polybrominated Diphenyl Ethers(PBDEs)

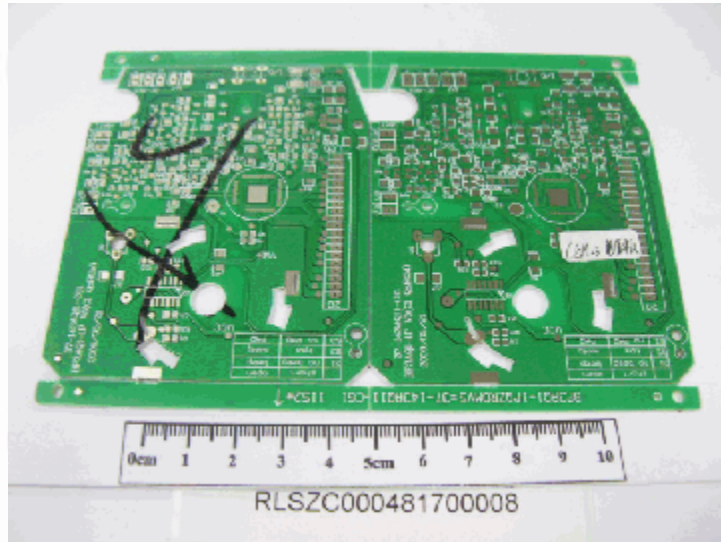


Test Report

Report No. RLSZC000481700008-A

Page 4 of 4

Photo(s) of the sample(s)



*** End of report ***

This report is considered invalidated without the Special Seal for Inspection of the CTI. This report shall not be altered, increased or deleted. The results shown in this test report refer only to the sample(s) tested. Without written approval of CTI, this test report shall not be copied except in full and published as advertisement.

Building C, Hongwei Industrial Zone, Baoan 70 District, Shenzhen